

YRA Spring 2, The Summer Sailstice – June 19, 2010

Hosted by the South Beach Yacht Club | Pier 40 on the Embarcadero | San Francisco, CA 94107

Race Committee PRO: Tad Sheldon, (408) 688-1355

Organizing Authority: The YRA of San Francisco Bay

SAILING INSTRUCTIONS – Rev 6/14/10

1.0 RULES

- 1.1 Races will be governed by the *rules* as defined in current version of *The Racing Rules of Sailing of 2009-2012*. **These sailing instructions replace the YRA Standing Sailing Instructions.**

2.0 CHANGES TO THE SAILING INSTRUCTIONS

- 2.1 Changes to the sailing instructions will be posted on the YRA website, and mailed to entrants conforming to the HDA and ODCA Notices of Race (NOR) 7.3, by 5 PM the Wednesday before they will take effect.

3.0 CLASS FLAGS

- 3.1 HDA Classes
- | | <u>Flag</u> |
|-----------------------------|-------------|
| HDA G (99&Under/SportBoats) | G (GOLF) |
| HDA D (SF 30's) | D (DELTA) |
| HDA K (102 & Up) | K (KILO) |
- 3.2 Class flags **are required** to be flown from the backstay of HDA fleets.
- 3.3 ODCA Classes
- | | <u>Flag</u> |
|-------------|-------------|
| EXPRESS 37 | C (CHARLIE) |
| ISLANDER 36 | E (ECHO) |
| SANTANA 22 | W (WHISKEY) |
| SF 180 | T (TANGO) |
- 3.4 Class flags **are not required** to be flown from the backstay for ODCA fleets.

4.0 STARTING AND FINISH LINES

- 4.1 The Start line (S) will be a line between a yellow or orange flag or orange panel on the RC boat and the Start/Finish mark specified in the course descriptions. The RC boat may set a limiting mark (which shall be considered part of the RC boat) close to her and on the same end of the starting line to protect her.
- 4.2 The Finish Line (F) will be located within 0.3nm east of Treasure Island north of the Bay Bridge, and shall be a line from an orange flag, panel or inflatable mark on the shore or a pier of Treasure Island to an inflatable mark in the waters within 0.3nm east of Treasure Island. A limiting mark may be placed close to shore, this buoy must be left to starboard when finishing.
- 4.3 Refer to **Attachment 1** to determine specific Start & Finish line locations, as well as a chartlet of the temporary marks next to Treasure Island.

5.0 COURSES

- 5.1 The courses and marks are described on **Attachment 1**.
- 5.2 The courses to be sailed will be displayed by the Race Committee (RC) with numeric International Code Flags.

6.0 THE START

- 6.1 See **Attachment 1** for Scheduled start time and order.
- 6.2 Races will be started using RRS 26 as modified. Times will be taken from the visual signals; the absence of a sound signal shall be disregarded.

Signal Flag(s)	Sound	Minutes before Start	Course Signal
WARNING Class or Group	1 gun or horn	5	Raise Course Signal
PREPARATORY P, I, or Z	1 gun or horn	4	
Drop PREP	1 horn	1	Drop Course Signal
START	1 gun or horn	0	

Warning signal for each succeeding class shall be made with or after the starting signal for the preceding class. NOTE: PREP Signal 'Black Flag' will not be used for YRA races. Boats shall not start later than 10 minutes after their signaled start.

- 7.0 **TIME LIMIT:** a time limit of four (4) hours for each class racing after their start.

8.0 COMMUNICATIONS

8.1 **The Race Committee will attempt to hail boats for OCS and other pertinent information on VHF Channel 78.** The inability of a competitor to hear a hail for OCS or any other information shall not relieve her of her responsibility, nor shall it be grounds for redress. This changes RRS 25 and 63.1. Check in is not required. Boats are also encouraged to monitor VHF Channel 14 for updates on large vessel traffic.

8.2 Racers not finishing the race or not finishing the race within the time limit are required to contact the RC Committee and inform them they are dropping out or will not be finishing within the time limit. Unless directly and specifically acknowledged by the RC, skippers must report the fact to the YRA answering service at 415-771-9500. If not able to report while underway, telephone contact must be made immediately after coming ashore.

9.0 RECALLS

9.1 **INDIVIDUAL RECALL.** In addition to provisions of RRS 29.1, the RC may hail OCS boats by VHF radio on the designated channel. Failure of a hail, failure of a boat hearing the hail, or the order of hails shall not be grounds for redress.

9.2 **GENERAL RECALL.** In addition to provisions of RRS 29.2, add: If there is a second General Recall, that group will start after the last scheduled group of starters in first starting sequence on a course determined by the race committee.

10.0 RESTRICTED AREAS

10.1 For safety reasons, lines between the following objects and the closest points ashore from them are restricted: Anita Rock and any buoy marking same, vertical 'H' beam off Water Quality Control Plant west of StFYC, bell buoy 7 off the west end of Alcatraz, and Point Blunt buoy off Angel Island. . Above obstructions are not marks of the course. The South Tower of the Golden Gate Bridge must be left to the South at all times. Any rocks visible at Mean Lower Low water immediately adjacent to Contra Costa County, Marin County or San Francisco shorelines shall be left to shoreward, except for Mile Rock, The Brothers and Red Rock. The Eastern span of the Bay Bridge is restricted except for the Alternative Navigation Channel during construction.

10.2 The above-mentioned areas and buoys are defined as obstructions. A boat that breaks this rule may not correct her error per RRS 28.1 and shall retire.

10.3 Boats whose preparatory signal has not been made shall keep clear of any boat whose preparatory signal has been made. Boats shall not cross the Start or Finish line except when preparing to start, starting or finishing. Boats observed by the race committee to be in violation of this instruction may be scored DNF without a hearing. This changes RRS 63.1. On courses signaled as twice around, boats shall NOT sail through start/finish line to start second rounding.

11.0 INTERFERENCE WITH OTHER VESSELS

11.1 Rule 9 of the Inland Rules of the Road applies. Boats shall not impede the passage of a vessel which can safely navigate only within a narrow channel or fairway (see US Dept. of Commerce chart 18649 for designated shipping channels and fairways) A violation of Rule 9 is subject to protest by any competitor or the RC, and is not exonerated by an alternate penalty. RRS 60.3 is changed to add: "(d) call a hearing for an alleged breach of Rule 9 if notified by government, commercial or individual vessel of possible infraction. It shall also extend the time limit under RRS 61.3 to accept the information." A DSQ for violation of Rule 9 shall be considered a DNE.

12.0 SCORING

12.1 Scores will be assigned according to the NOR.

13.0 PROTESTS

13.1 Protests under RRS 61.1 shall be submitted in writing in accordance with RRS 61.2 and mailed or faxed to the YRA office not later than midnight on Monday following the regatta, or if Monday is a holiday, on Tuesday. Unless otherwise agreed to by all parties, protests will be heard at the clubhouse of the sponsoring yacht club on the third Monday following the race at 1930, or if that Monday is a holiday, it shall be held on the following Tuesday. Yacht clubs are responsible for sending a copy of the protest to the protested boat along with notification of the time and place of the hearing to parties to the protest.

Attachment 1

SCHEDULED START TIME AND ORDER:

Fleet	Flag	Race No.	Time	PHRF
<i>Warning</i>			1155	
Multihulls	R	1		n/a
HDA G*	G	1		99 & Under
HDA D (SF 30's)*	D	1		SF 30's
HDA K *	K	1		102 & Over
Islander 36	E	1		144
SF 180	T	1		180
Santana 22	W	1		234

*The HDA fleets are competing for the **OCSC Summer Sailstice Perpetual Trophy**, awarded to the PHRF mono-hull with the best corrected time overall. All HDA fleets will sail the same course.

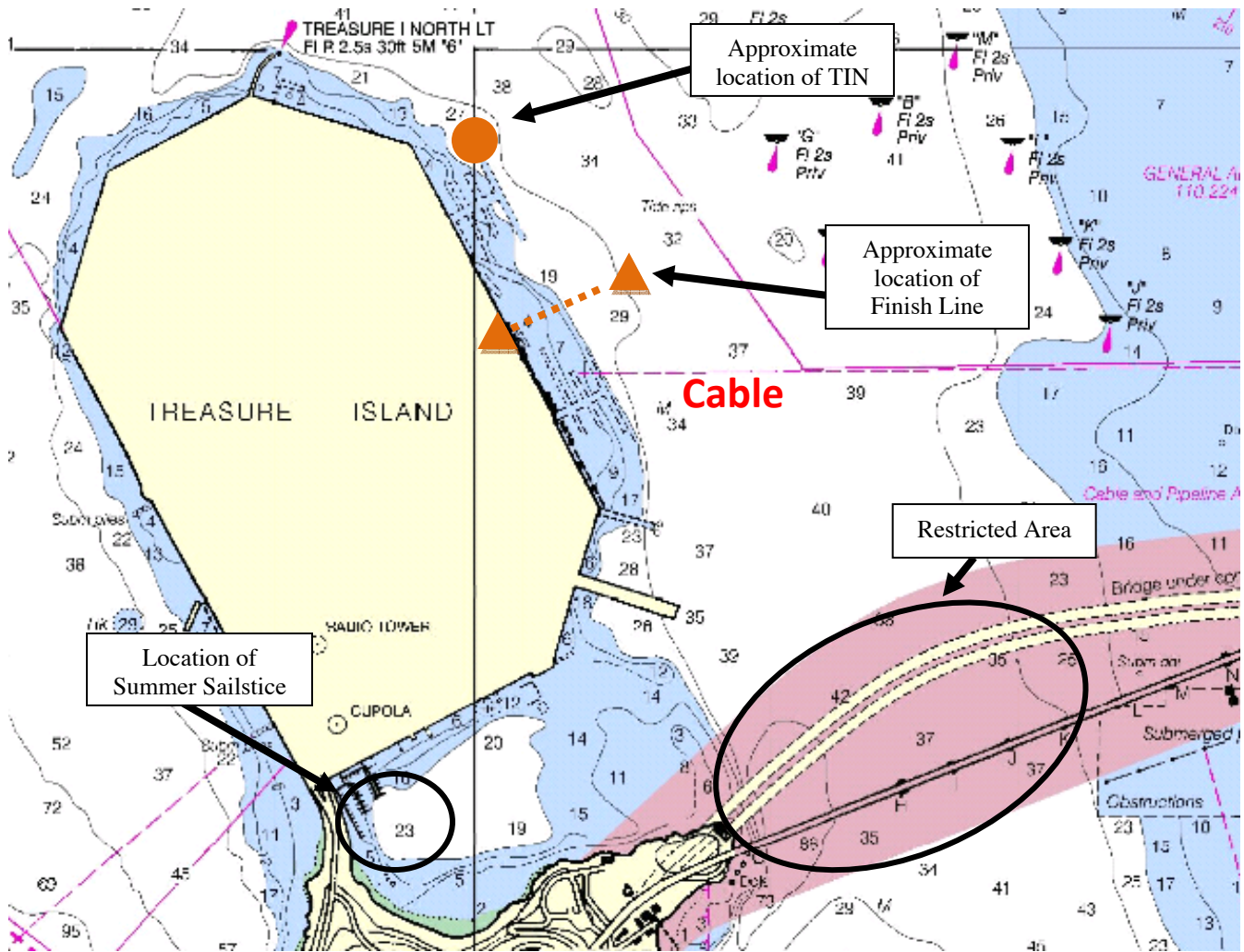
COURSES: ALL MARKS ROUNDED TO PORT unless otherwise indicated.

Course	Start	Mark	Mark	Mark	Mark	Mark	Finish	Dist
1*	EOC	24				TIN-s	TI	4.1
3	EOC	7				TIN-s	TI	3.5
4*	EOC	23				TIN-s	TI	5.2
5	EOC	21				TIN-s	TI	5.6
7	EOC	2				TIN-s	TI	6.5
8	EOC	17	7			TIN-s	TI	8.7
9	EOC	17	FOC	8		TIN-s	TI	12.1
11	EOC	17	8	17		TIN-s	TI	14.3
12	EOC	17	21	8	17	TIN-s	TI	15.3
13	EOC	17	21	24	17	TIN-s	TI	16.4
14	EOC	17	21	FOC	17	TIN-s	TI	18.6

*Courses 1 & 4 may be used by ODCA fleets in the case of a North Wind.

DESCRIPTION OF MARKS:

- 2** Alcatraz Island
- 7** R "2" FI 6s nm Northwest of Treasure Island
- 8** R "4" FI 4s Horn 1 nm East of Point Blunt
- 15** Temp YC Buoy Approx. 0.5 nm East of Yellow Bluff (Sausalito vicinity)
- 17** RG "HR" FI (2+1) R6s Harding Rock
- 21** G "1" FI G6s Approx. 0.65 nm NE of Alcatraz
- 23** RW "A" Mo (A) East of Angel Island
- 24** R "6" FI R 4s Bell, 1.1 nm East of Quarry Pt
- D** R "3" FI G 4s 15 Ft on Olympic Circle
- EOC** Olympic Circle Buoy "E"
- FOC** Olympic Circle Buoy "F"
- TIN** Temp YC Buoy within 0.3nm east of Treasure Island on a line approximately southwest of the Treasure Island North Light, as shown on the following chartlet
- TI** Temp YC Buoy Approx 0.3nm east of Treasure Island, south of TIN, and north of the Bay Bridge as shown on the following chartlet



Chartlet
For Information Only, Not Suitable for Navigation



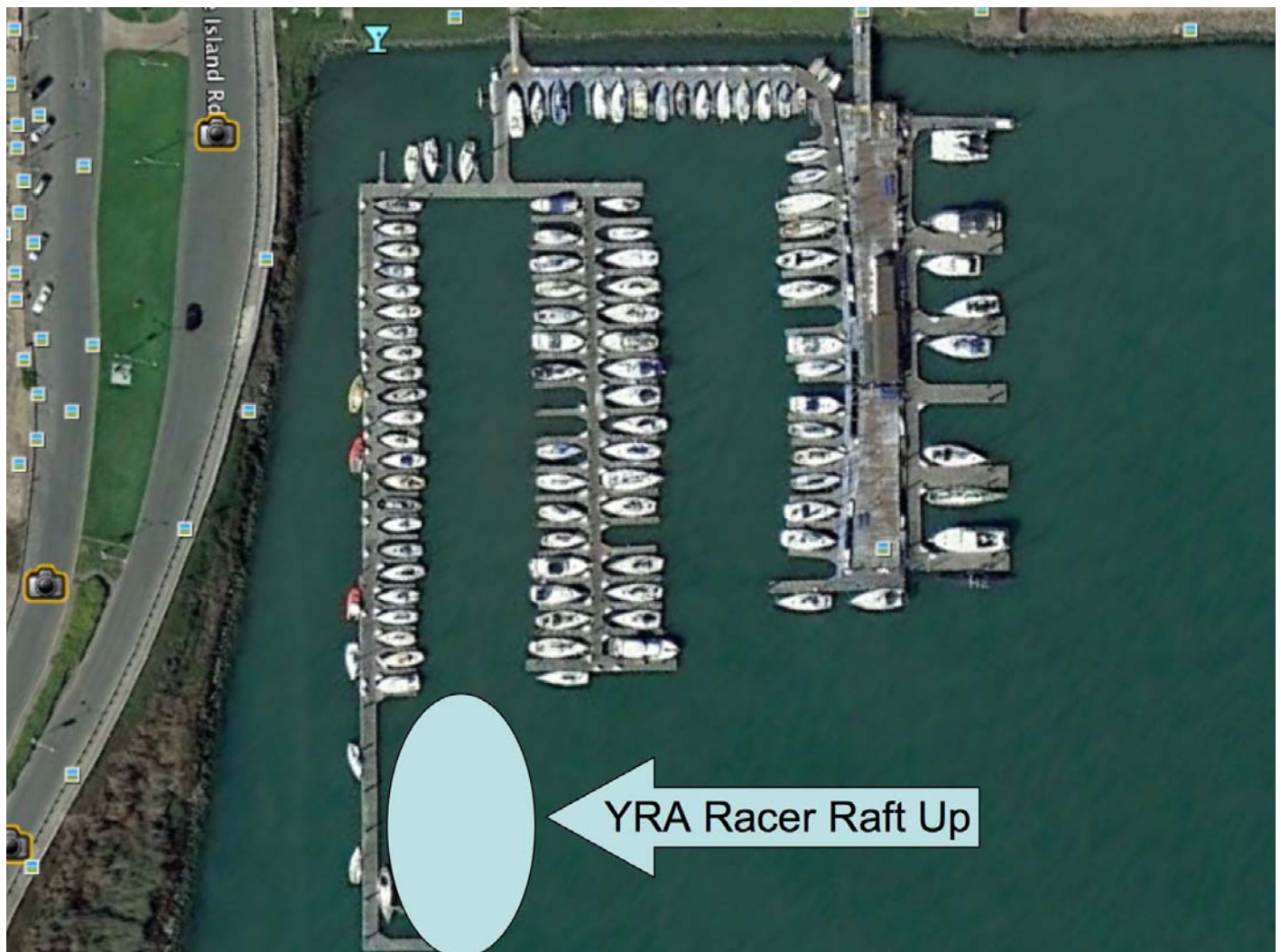
2010

summer sailstice

Everyone is encouraged to participate in the Summer Sailstice Celebration on Treasure Island at the conclusion of the race. Food, drink, music and other fun activities will be provided for a nominal fee, and proceeds will support the Treasure Island Sailing Center. Free anchorage with complimentary water taxi is available. For more information, please visit <http://www.summersailstice.com/358/>. Please come support the Treasure Island Sailing Center!

There will be space reserved for the YRA Sailstice Racing Fleet on the Treasure Island Marina Docks for 2 and maybe 3 raft-ups of 5 to 6 boats each. The Marina should have additional space available on the temporary boat-ride docks on the east side of the Marina as well. This is available on a first-come basis. Skippers can hail the Treasure Island Harbormaster on channel 78 for instructions.

Below is a Google Earth picture showing the YRA Raft Up Reserved Space:





SAN FRANCISCO BAY'S SUMMER SAILSTICE 2010 FESTIVAL

Free Admission! Free Admission!



12:30 PM: Barbary Ghosts www.myspace.com/thebarbaryghosts

Joan Wilson Rueter and Shawn Magee, with Brian Theriault on fiddle. With their salty yet sweet vocal harmonies blending seamlessly over a core of fiddle, guitar and accordion, The Barbary Ghosts evoke the best of a bygone era, bringing you back to the days of sailing ships and whiskey soaked dancehalls. From traditional sea chanties, to rowdy singalongs, to tear jerking ballads, the Ghosts bring a fresh take on old standards as well as creating clever original songs that you'd swear you'd heard somewhere before.

1:30 PM: Na Mamo No`eau

www.namamonoeau.net

Na Mamo No`eau is a Hālau created to educate, enrich and entertain through performances of the songs (mele), stories (mo`olelo) and dances (‘auana a me kahiko) of the Hawaiian people. This Hālau also acknowledges the roots (na kumu) of its Hawaiian heritage through performances inspired by other Polynesian cultures (na ‘ike a me na hana). The Hālau seeks to amply demonstrate that these traditions (na mo’o) and cultural expressions can improve the human condition.



songs (mele), stories (mo`olelo) and dances (‘auana a me kahiko) of the Hawaiian people. This Hālau also acknowledges the roots (na kumu) of its Hawaiian heritage through performances inspired by other Polynesian cultures (na ‘ike a me na hana). The Hālau seeks to amply demonstrate that these traditions (na mo’o) and cultural expressions can improve the human condition.



2:30 PM: Michael McNevin & Patrick McClellan

www.michaelmcnevin.com

A Bay Area native, Michael has performed across the U.S. for the last 15 years, and he's been a main stager at some of the bigger music festivals around including the Strawberry, Kerrville, and Philadelphia folk festivals. He has a seasoned voice, accomplished guitar work, and is known for a distinct and vivid brand of storytelling in his lyrics. He is a 5-time winner of the West Coast Songwriters Assoc. "Song Of The Year," and was nominated for "Artist Of The Year" by the Nat'l. Academy Of Songwriters. Patrick has been performing since the 1960s and has played upright bass with Michael at various festivals and

local venues. He also is a member of the Niles Canyon Band and The Real Placebos, a swing jazz quartet.

3:30 PM: Siva Polynesia www.myspace.com/sivapolynesia

Siva Polynesia is a family based entertainment dance company, and a collective group of award winning artists who have performed professionally within the islands of the Pacific and beyond. The group's director, Jenny Taloa, is an accomplished award winning Tahitian dancer with over 20 years experience in Polynesian performing arts. Her main



focus is to share the culture to children and in our community, in hopes of teaching and performing the fascinating cultures of Polynesia through art and dance.



4:30 & 6:00 PM until close: Bowjones

A group of musicians who lived through the times when "classic rock" was new... Bowjones - bringing the vibe and atmosphere of the 60's thru 90's back to the future! A tribute band of brothers performing the rock you grew up with!!

TREASURE ISLAND – Saturday, June 19, 2010 – SAN FRANCISCO

www.summersailstice.com/sf

MUSIC – FOOD – ENTERTAINMENT – SAILBOAT RIDES